

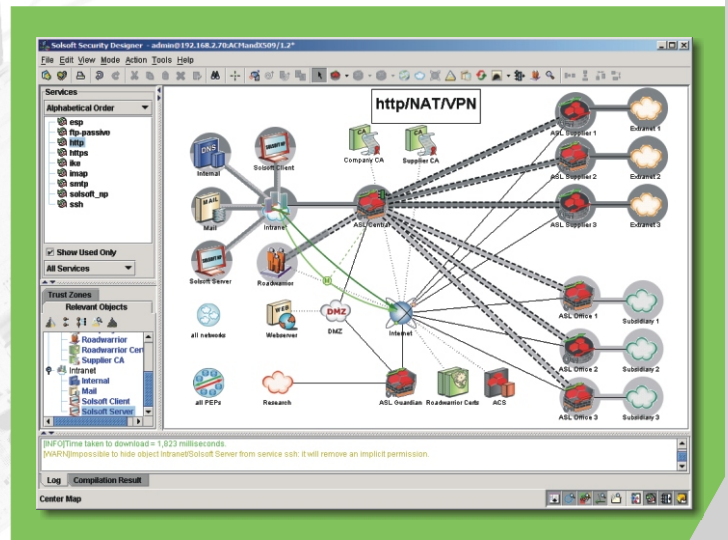


Astaro Configuration Manager

Managing multiple network security installations can be a challenging and time-consuming task. Administrators need to define security policies consistently across an organization, configure firewalls, virtual private networks, intrusion protection systems, anti-virus software and other applications to implement these policies, and then deploy these configurations to many remote locations.

Astaro Configuration Manager™ provides a centralized visual command center where security policies can be created quickly and easily using a high-level point-and-click design tool. The resulting configurations for all Astaro Security Linux applications can be distributed automatically to many locations. These configurations can then be updated and audited from a central location.

- ▶ Central Management
- ▶ Visual Policy Definition
- ▶ Simplified Deployment
- ▶ Auto-Implementation
- ▶ Enterprise Roll-out



Description

Astaro Configuration Manager allows administrators to visually design complex security policies on a protocol-by-protocol basis, easily and precisely. Administrators can use business requirements to create a simple, scalable model of detailed security policies. Astaro Configuration Manager then uses this model to generate, distribute and manage configuration information for all six of the applications in Astaro Security Linux: firewall, VPN, intrusion protection, anti-virus, spam blocking and URL filtering.

Features

Key features of Astaro Configuration Manager include:

- ▶ A single, centralized security management console for global networks.
- ▶ A visual, object-oriented interface for easier definition and creation of firewall, NAT, proxy, VPN, intrusion protection, anti-virus and other security policies.
- ▶ The grouping of resources for scalability and ease of management.
- ▶ The simple graphical definition of security policies through drag-and-drop techniques.
- ▶ Automated distribution of configurations, to reduce time to deployment and enable an immediate response to security threats and changes in the business environment.
- ▶ Audit reports to review and document policy and configuration changes.
- ▶ A centralized policy repository and versioning system.

Astaro Configuration Manager provides a dashboard-level view of the policy lifecycle, including rule summaries, deployment status, and change histories. This dashboard is web-based and can be viewed from any location with a browser.

Detailed reports can be created, saved and reused, and common operational tasks can be scheduled.

Teamwork and Efficiency

The drag-and-drop visualization and process-oriented workflow enables small teams to collaboratively configure and enforce security policies across large, complex network topologies.

A centralized policy repository and versioning system facilitates role-based policy creation and deployment.

Automatic Deployment of Security Policy

The Network Policy Engine in Astaro Configuration Manager understands the topology of your network as well as the capabilities and languages of your network security devices.

Policy Definition Features

- ▶ Topological definition for networks, devices and groups of objects sharing the same policy
- ▶ Visual definition of firewall, NAT, proxy and VPN policies including PSK- as well as X.509-certificates-based authentication
- ▶ Unique, visual NAT support, including: Static, Pool, PAT, Masquerading and Port Forwarding
- ▶ "Zoning" feature allowing definition of pre-determined flow paths for complex meshed networks

Policy Deployment Features

- ▶ Automatic generation of VPN, NAT, proxy and security configurations on all network security devices
- ▶ Ability to view, print, and validate generated device configurations
- ▶ Automatic uploading of configurations on target equipment utilizing dynamic IP addresses (DynDNS)
- ▶ Secured communications with devices through SSH encryption

Policy Maintenance Features

- ▶ Policy audit reports to check and report security policy per object (machines, devices, networks, groups of objects)
- ▶ At the click of a mouse, users may instantly audit individual devices, IP addresses, VPN tunnels, or entire networks
- ▶ A Web-based query engine gives security managers and auditors the power to run detailed reports on the entire policy lifecycle
- ▶ Granular user privileges can be defined in an unlimited number of user profiles
- ▶ Change control and versioning including policy histories record changes made by each user can be leveraged for roll-back or to apply scenario-based configurations

System Requirements

Policy Server

- ▶ Microsoft Windows 2000 Server, SP2 or higher
- ▶ Linux Red Hat 9.0
- ▶ 512 MB RAM minimum, 1024 MB RAM recommended
- ▶ 4 GB free hard disk space
- ▶ Graphics card supporting at least 1280 x 1024 with 32K colors

Policy Client

- ▶ Microsoft Windows 2000, SP2 or higher
- ▶ Microsoft Windows XP
- ▶ Linux (glibc 2.2)
- ▶ 384 MB RAM minimum, 512 MB recommended
- ▶ 200 MB free hard disk space
- ▶ Graphics card supporting at least 1280 x 1024 with 32K colors

Versions

Astaro Configuration Manager Server
Available device modules:

- ▶ Astaro Security Linux V4 & V5
- ▶ For Check Point, Cisco, Juniper Netscreen, Nortel Networks, Symantec please call

About Astaro

Astaro provides a network security solution that is complete, simple to manage, affordable, and effective. Astaro selects and integrates the best of open source security software to provide the widest range of innovative security technology available in a single package. Astaro's software has won numerous awards, and is in use on over 20,000 networks in more than 60 countries. Astaro Security Linux is distributed by a worldwide network of solutions partners who offer local support and services.

Americas

Astaro Corporation
3 New England Executive Park
Burlington, MA 01803
USA
T: +1 781 272 8787
F: +1 781 272 8989
americas@astaro.com
Offices in Los Angeles/California,
Chicago/Illinois and Kelowna/
Canada

Europe, Middle East, Africa (EMEA)

Astaro AG
Pfinztalstrasse 90
76227 Karlsruhe
Germany
T: +49 721 490 069 0
F: +49 721 490 069 55
emea@astaro.com
Offices in Pinneberg/Germany,
Paris/France and Reading/UK



www.astaro.com

Asia Pacific (APAC)

T: +49 721 490 069 0
F: +49 721 490 069 55
apac@astaro.com

Your Astaro Partner